




Electronic Hook Switch for Alcatel-Lucent

Alcatel-Lucent 



Desk Phone Models
 IP Touch 4028, IP Touch 4038, IP Touch 4068, Touch 4029, Touch 4039, My IC 8082

EHS Cable



APA-23*
 PN: 38908-11

* APA-23 replaces APA-20 and APA-22

Plantronics Audio Solutions



Savi 700 Series
 Wireless headset system manages PC, mobile and desk phone calls



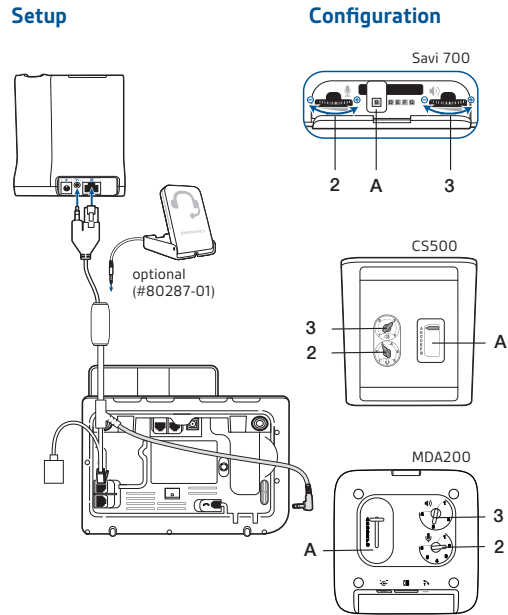
CS500 Series
 Wireless headsets manage desk phone calls



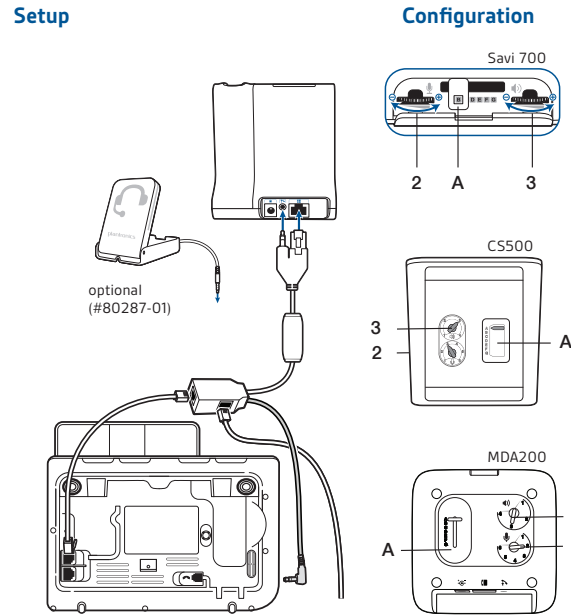
MDA200
 Enables USB connectivity to the desk phone to manage both PC and desk phone calls

EHS Setup Use the EHS setup below to automatically answer a desk phone call by pressing a button on your Savi 700 Series or CS500 Series headset or MDA200.

Alcatel-Lucent models: IP Touch 4028, 4038, 4068



Alcatel-Lucent models: Touch 4029, 4039



Alcatel-Lucent models: My IC 8082

